



- [DID YOU KNOW?](#)
- [SOME DOMESTIC VIOLENCE STATS](#)
- [OUTREACH BY MAIFS VOLUNTEERS](#)
- [POVERTY AND DOMESTIC VIOLENCE: WHAT YOU NEED TO KNOW](#)
- [UPCOMING EVENTS](#)
- [CSU GRANT UPDATE](#)
- [JOB OPPORTUNITIES](#)
- [WAYS TO DONATE](#)

DID YOU KNOW?

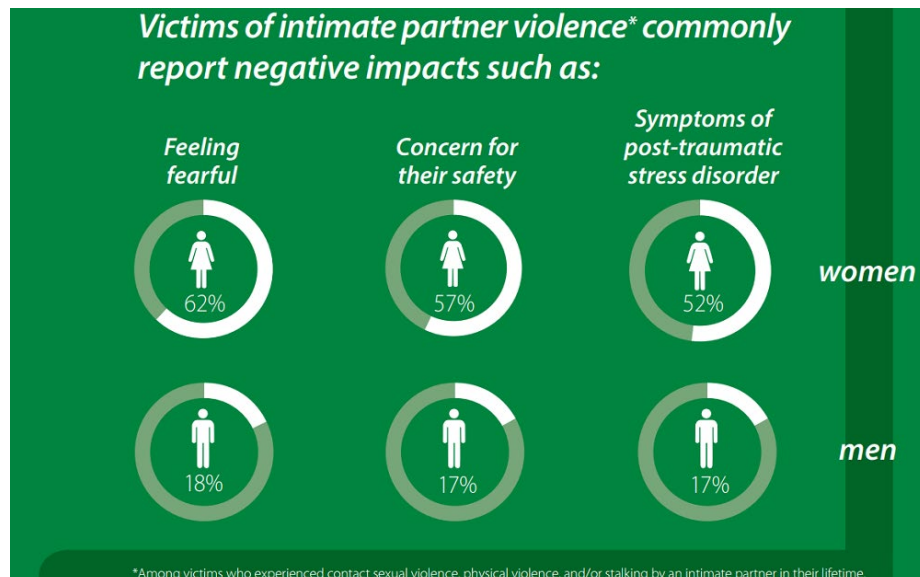
Domestic violence is not a family matter. It is a crime, and it is in Michigan. The Michigan State Police Crime in Michigan publication tells us there were 91,004 reported victims and 105 reported murders related to domestic violence in 2017 alone. The numbers have since increased. Domestic violence is a misdemeanor punishable by up to 93 days in jail and/or a \$500 fine.

Under Michigan law, a person has a domestic relationship if any of the following apply:

- Spouse or former spouse
- Dating relationship or former dating relationship
- Child in common
- Resident or former resident of the same household

If you have further questions, [contact us](#).

SOME DOMESTIC VIOLENCE STATS





**DV QUESTIONS OR CONCERNS, CALL US
MAIFS HELPLINE: 888 664 8624**

OUTREACH BY MAIFS VOLUNTEERS



MaiFS volunteers Shaila, Sudha, Rupal, Jagruti coordinated our presence at the holiday event in Troy. Engagement with local communities is one of the services Mai Family Services offers in order to raise awareness about Domestic Violence. Reach out to us if you have any questions!

POVERTY AND DOMESTIC VIOLENCE: WHAT YOU NEED TO KNOW

BY RISHAB RAO, 11TH GRADER, TROY HIGH SCHOOL

Poverty puts women at greater risk for domestic violence in general. According to data from the U.S. Department of Justice, “women with household incomes of less than \$7,500 are 7 times as likely as women with household incomes over \$75,000 to experience domestic violence.”

Poverty causes women to stay with their abusers. Globally, poverty disproportionately impacts women, including single mothers, making them more likely to be dependent on men in their lives. This makes it harder for women to leave abusive situations, as they are often cut off from support systems and lack the knowledge or skills to survive on their own.

Poverty is a major link between domestic violence and homelessness. Landlords often evict women who seek to escape abuse, or even refuse to rent to victims. This forces women to remain silent about the abuse they face and contribute to a culture of silence regarding domestic violence.

UPCOMING EVENTS MARK YOUR CALENDAR!

South Asian Culture and Domestic Violence

Date: Wednesday Nov 8th 2023,

Venue: Bloomfield Township Public Library, 1099 Lone Pine Road, Bloomfield Township, MI 48302

Time: 10 AM -12:00 PM

Registration link: <https://maifs.org/south-asian-culture-and-domestic-violence-workshop/>

Registration deadline is Friday, Nov 3, 2023.

Please direct any questions to info@maifamilyservices.com

A vertical poster for the Annual Holiday Banquet 2023. The background is a gradient of purple and blue with a starry night sky effect. At the top center is a circular logo featuring a stylized family silhouette (two adults and a child) in white and yellow. Below the logo, the text reads: "Mai Family Services presents" in a white serif font. The word "ILLUMINATE" is written in large, white, stylized, hand-drawn letters. Below that, "Annual Holiday Banquet 2023" is written in a white serif font. The date and time, "Saturday, December 2, 2023" and "6:00 PM", are listed in a white serif font. The venue, "Farmington Manor", is written in a white serif font, followed by the address "23666 Orchard Lake Rd, Farmington Hills, MI 48336" in a smaller white serif font. A yellow rectangular box contains the registration link "https://maifs.org/december-banquet-registration/". Below the link, a short paragraph of text in a small white font reads: "Mai Family Services depends on your contributions to provide vital services to South Asian families in need. We sincerely appreciate your generosity. We hope you will choose Mai Family Services as one of your preferred charities for tax-deductible donations and encourage your friends to do the same." At the bottom, the text "Visit www.MAIFS.org to learn more." is written in a white serif font. The right side of the poster features a decorative white floral scrollwork design.

Registration link: <https://maifs.org/december-banquet-registration/>

CSU GRANT UPDATE

Since 1986, MaiFS has steadfastly supported survivors of domestic violence in the South Asian community, offering crucial intervention, prevention, and empowerment services.

As part of this commitment, for the eight year in a row, our CSU- Grant program funded by the State of Michigan's Division of Victim Service (DVS) offers vital support to South Asian domestic violence survivors in Metro Detroit, providing essential services for their journey to empowerment.

The CSU-Grant initiative, offers DV advocacy/counseling, life-skills sessions, and limited tuition assistance to South Asian domestic violence survivors in Metro Detroit, empowering them on their journey.

For more details about the CSU Grant program, please get in touch with Murali Nair at 248-795-4639. You can also find additional information about the CSU-Grant program on our website: www.maifs.org

JOB OPPORTUNITIES

- **[DV ADVOCATE](#)**

How to apply:

"Please e-mail a cover letter detailing your relevant experience and resume to Jobs@maifamilyservices.com indicating the position you are applying for in the subject line."

Please provide three references.

We will be accepting applications and interviewing candidates on a rolling basis till the positions are filled.

WAYS TO DONATE

Thank you MaiFS well-wishers and donors for your monetary contribution and your continued support for the work that we do at Mai Family Services. The major portion of the funds collected from our donors is expended in providing direct services to our clients (housing, food, utilities and other necessities) and paying for the infrastructure that supports this work and building awareness through outreach.

Our sincere appeal to you to choose Mai Family Services as your preferred charity for the year 2023 AND beyond for donation.

There are **several ways** you can donate and make a difference in survivors' and their children's lives:

Zelle at admin@maifamilyservices.com

Venmo at [@maifsadmin](#)

Mail a **check** to **32401 W Eight Mile Rd, Livonia, MI 48152**

Scan the QR code to pay by **Credit Card**



Thank you for supporting Mai Family Services!



Our mailing address is:
MAI FAMILY SERVICES
32401 W. Eight Mile Rd
Livonia, MI 48152

