



- DOMESTIC VIOLENCE MESSAGE
- DID YOU KNOW?
- SURVIVOR IMPACT
- MAIFS - CSU GRANT UPDATE
- DONATION APPEAL
- WE ARE HIRING!
- HIGH SCHOOL STUDENTS-SURVEY/INTERVIEW
- PARTNER EVENT

DOMESTIC VIOLENCE MESSAGE

Mai Family Services, the second oldest South Asian survivor centric agency in North America providing support for domestic violence survivors is seeing an upsurge in family and domestic abuse situations in SE Michigan. Not only is the State witnessing more fatalities across the general population, but incidents, where children, seniors, or pets are facing violence in addition to other victims in the household, have increased.

Research out of University of Michigan suggests that the role of stressors brought on by the economic landscape such as the loss of employment and social support may have contributed to the heightened violence. Cases are turning more violent, and they are escalating. Wayne County alone serves over 7000 survivors a year across all communities.

Domestic violence is “a pattern of learned behavior in which one person uses physical, sexual, and emotional abuse to control another person.”

If you or anybody you know are in an abusive relationship or household, please call **MaiFS Free Helpline: (888) 664-8624.**

Dial 988 - Suicide and Crisis Lifeline provides 24/7 confidential support.

Stay engaged. Get Involved

DID YOU KNOW? BATTERER SPOUSE WAIVER

A battered spouse waiver and a battered child waiver are legal protections under the Violence Against Women Act (VAWA) for immigrant victims of abuse who have conditional permanent residence. Normally, once you are married to your US citizen or lawful permanent resident spouse for two years, you can apply to get the “condition” removed from your lawful permanent residence when your spouse, who filed the initial application for your status, signs a “joint petition” with you.

However, when there is domestic violence, the abusive spouse may refuse to file the joint petition or use it as a tool of power and control to further abuse you. This is why Congress created the battered spouse waiver under VAWA. If you are abused, you can file for a “waiver” of this “joint petition” requirement so that you don’t need your spouse’s participation in getting the condition removed from your conditional permanent residence status. If you can prove that you were abused by your spouse or parent, you can get this VAWA battered spouse waiver.



SURVIVOR IMPACT



Ms. Z and her children are domestic violence victims living in Metro Detroit. They escaped an abusive home and came to Mai Family Services (MaiFS) with little more than the clothes on their backs. MaiFS provided monetary assistance for accommodation and living expenses, provided winter clothes, medical expenses, and transportation costs. From the outset the survivor made it clear that she wanted to be independent and support herself and her children.

With the assistance of MaiFS caseworkers, Ms. Z signed up for an online GED program. Funds from the CSU grant enabled us to buy her a laptop for her classes. Initially she struggled with her classes and homework assignments because of her limited computer skills. CSU grant funds helped pay the salary for a computer instructor. The CSU grant staff worked with her and the instructor to develop an instructional computer class suited to her needs – one that taught her the skills to succeed in her schoolwork.

Ms. Z, like many South Asian DV survivors have a hunger for learning. The CSU grant has enabled MaiFS to provide participants like Ms. Z and others with the necessary skills to empower themselves and help them lead a life free from the fear of domestic and family violence.

MAIFS - CSU GRANT UPDATE



The MaiFS Culturally Specific Underserved (CSU) Grant team organizes culturally sensitive workshops and presentations in community settings to dispel misconceptions and raise awareness about domestic violence, family, and sexual violence. These events serve as platforms to share community-wide support resources aimed at empowering individuals affected by these issues. Additionally, the team conducts extensive outreach efforts through multilingual campaigns to overcome language barriers within the Michigan Asian community, encouraging individuals to seek assistance.

Through collaborations with organizations focused on the Michigan Asian community, the CSU-Grant program provides empowerment sessions for victims of domestic violence and offers tailored support services, counseling, and life skills sessions to enhance the capabilities of program participants.

Since 2022, the Grant program has empowered a total of 31 DV victims/survivors belonging to the Bangladeshi, Chinese, and Indian communities in Metro Detroit. These participants have benefited from domestic violence advocacy and counseling sessions while acquiring essential life skills such as English language proficiency, computer literacy, and basic financial management. Additionally, some participants have received limited tuition or educational assistance to improve their employment prospects.

DONATION APPEAL

MaiFS is serving 36 survivors who have been physically, mentally, emotionally, verbally, financially, and sexually abused. Additionally, 21 individuals have called the MaiFS helpline and office seeking resources to handle their crises since the start of the year 2024. We need your help to raise awareness and provide quality service to all those seeking support - some of whom have a voice and some suffering in silence.

Make a difference today!

Your donation to Mai Family Services can change lives. With your support, we can help survivors of abuse find the resources and care they need to heal and thrive. Join us in raising awareness and providing quality counseling services to those who need it most. Together, we can do this. Use any of the channels below to donate and be a beacon of hope for those in need.



Mai Family Services
Support when you need it most

Addressing the issue of South Asian trauma and domestic violence is crucial to bringing about meaningful change and supporting those who have experienced intergenerational abuse.

Domestic violence within South Asian communities often stems from deeply entrenched cultural norms, which can perpetuate cycles of abuse across generations. It is important to recognize that trauma resulting from such violence has a profound impact on individuals and their mental well-being.

Mai Family Services works towards breaking these cycles of abuse, promoting healing, and ultimately creating safer environments for individuals affected by trauma and domestic violence.

Could we count on your support? You can set up a monthly recurring payment or make a one-time donation to join the team making a difference. We thank you for your time and continuous goodwill.

Website:
<https://maifs.org/donate/>

Scan the QR Code 

Accommodation - 25%
Medical - 15%
Legal - 40%
Daily Needs - 20%



Image credit: adb.org

<https://maifs.org/donate/>



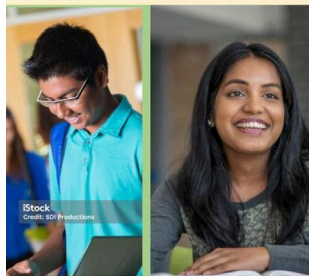
WE ARE HIRING!

Come, join the team at Mai Family Services for a fulfilling experience. We are hiring!
Visit <https://maifs.org/job-opportunities/>

HIGH SCHOOL STUDENTS- SURVEY/INTERVIEW OPPORTUNITY. RECEIVE AN INCENTIVE!

IRB: STUDY00009728

Date approved: 10.26.2023



Are you an Asian Indian/Indian American student in grade 6-12 attending a school in the United States?

We would like to know more about your experiences.

We are looking for Asian Indian students in grades 6-12 to participate in a study.

The research study aims to understand the experiences of Asian Indian students in a middle- or high-school in the U.S.

Participants will be asked to:

- Complete a set of questions which have choices for answers. These questions will ask you about:
 - Yourself, your identities, and who you are
 - Your experiences in school, and
 - Your emotions and feelings
- It will take about 15 minutes to complete all questions.
- You will receive an online link to complete these questions.

Participants will receive a \$10 incentive for participating in the study.

You can participate in the study if you are:

- In any grade between grades 6 to 12
- If you or one of your parents moved to the U.S. from India and identify as Asian Indian
- Currently attend a public, private, or charter school in the United States

If you want to learn more about the study, email the Principal Investigator:

- Ms. Lamia Bagasrawala, M.A., Ph.D. student, Michigan State University: bagasraw@msu.edu
- Dr. Courtenay Barrett, Ph.D., LP, NCSP, Assistant Professor, Michigan State University: morsicou@msu.edu

To participate, scan this QR Code or [click here](#):





Are you an Asian Indian/Indian American student in grade 6-12 attending a school in the United States?

We would like to know more about your experiences.

We are looking for Asian Indian students in grades 6-12 to participate in a research study.

The research study aims to understand the experiences of Asian Indian students in a middle- or high-school in the U.S.

Participants will be asked to:

- Participate in a confidential 90-minute individual interview on Zoom.
- You will be asked to:
 - Share your school experiences
 - Reflect on your different social identities, and
 - Share your feelings related to your school experiences.

Participants will receive a \$30 incentive for participating in the interview.

You can participate in the study if you are:

- In any grade between grades 6 to 12
- If you or one of your parents moved to the U.S. from India and identify as Asian Indian
- Currently attend a public, private, or charter school in the United States

If you want to learn more about the study, email the Principal Investigator:

- Ms. Lamia Bagasrawala, M.A., Ph.D. student, Michigan State University: bagasraw@msu.edu
- Dr. Courtenay Barrett, Ph.D., LP, NCSP, Assistant Professor, Michigan State University: morsicou@msu.edu

To participate, scan this QR Code or click [here](#):



MICHIGAN STATE
UNIVERSITY

PARTNER EVENT



**Adult
Panel Discussion**



**Youth
Panel Discussion**

Let us celebrate International Women Day with empowering conversation and fun activities:
Innovation and Technology for Gender Equality through Economic Empowerment

SAT
MAR 16
2024
10AM-3PM

Schoolcraft College | Vistatech Center

18600 Haggerty Road, Livonia, MI 48152

\$30 early bird special and \$35 after Feb 28

RSVP: bit.ly/IWDMI2024SignUp

Contact: aiwamich@gmail.com



Scan QR
to RSVP

OUR PROUD SPONSOR:



This event is initiated by AIWA in collaboration with Asian Americans and Pacific Islanders community organizations.

Thank you for supporting Mai Family Services!



Our mailing address is:
MAI FAMILY SERVICES
32401 W. Eight Mile Rd
Livonia, MI 48152

